

# Town of Taghkanic

## Privately Conserved Lands:

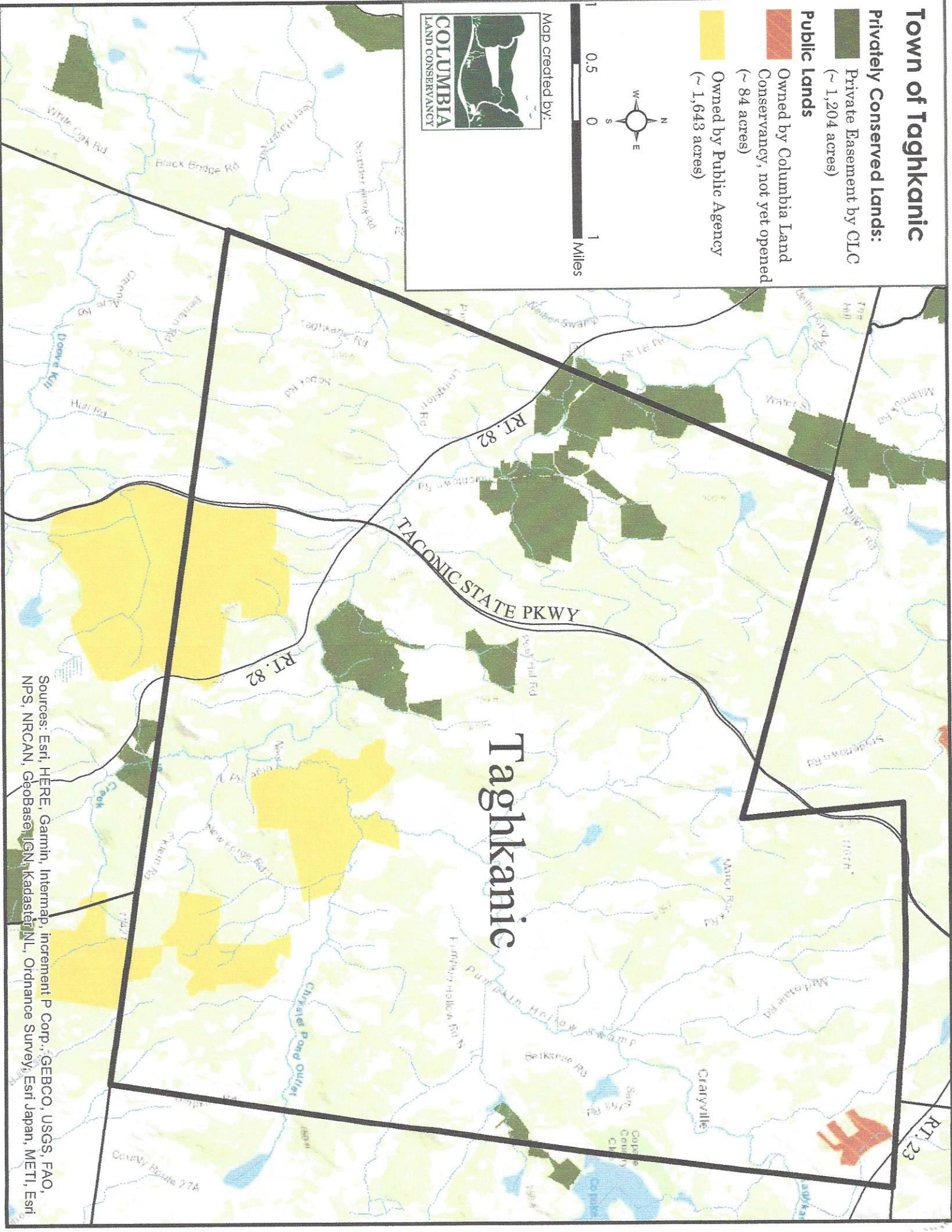
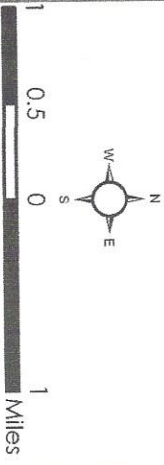
Private Easement by CLO  
(~ 1,204 acres)

## Public Lands

Owned by Columbia Land Conservancy, not yet opened  
(~ 84 acres)

Owned by Public Agency  
(~ 1,643 acres)

Map created by:



Sources: Esri, HERE, Garmin, Intermap, increment P Corp., GEBCO, USGS, FAO, NPS, NRCAN, Geobase, IGN, Kadaster NL, Ordnance Survey, Esri Japan, METI, Esri



# County Home to Rare Migration Corridor

hills of Columbia County are one of only two such "wildlife highways" in the entire Hudson Valley.

CLC also found that this critical corridor overlaps significantly with land The Nature Conservancy projects to be most likely to resist the negative impacts of climate change. TNC describes these areas as "... places where conservation is most likely to succeed over centuries." Protecting special places like these now will provide benefits long into the future.

CLC is using all of these data and more to update and refine our approach to conserving Columbia County's most special and important places. Stay tuned for future updates!

Longtime partner Scenic Hudson Land Trust has drawn upon the TNC data, incorporating it into their new Hudson Valley Conservation Strategy, which they have subsequently shared with CLC. We also thank The Open Space Institute for providing CLC with the TNC data, and some assistance interpreting it, along with a \$5,000 grant toward our recent conservation planning efforts.

Being an effective force for conservation means making use of the best tools and knowledge available. As part of our Strategic Conservation Planning efforts at CLC, we're taking a fresh look at the county's natural and cultural resources, evaluating new data from some great conservation partners, and identifying new strategies to help us keep Columbia County rural.

During the course of our evaluation of data mapped by Department of Environmental Conservation and The Nature Conservancy (TNC), we noticed a key wildlife corridor that runs right through the center of the County.

Think of this corridor as an informal highway for plants and animals. If a black bear, for instance, wanted to travel from Pennsylvania to Canada, this route through Columbia County is a path it would likely follow, as most other land is fragmented by development. The large swaths of wooded



These areas are places where conservation is most likely to succeed over centuries.

